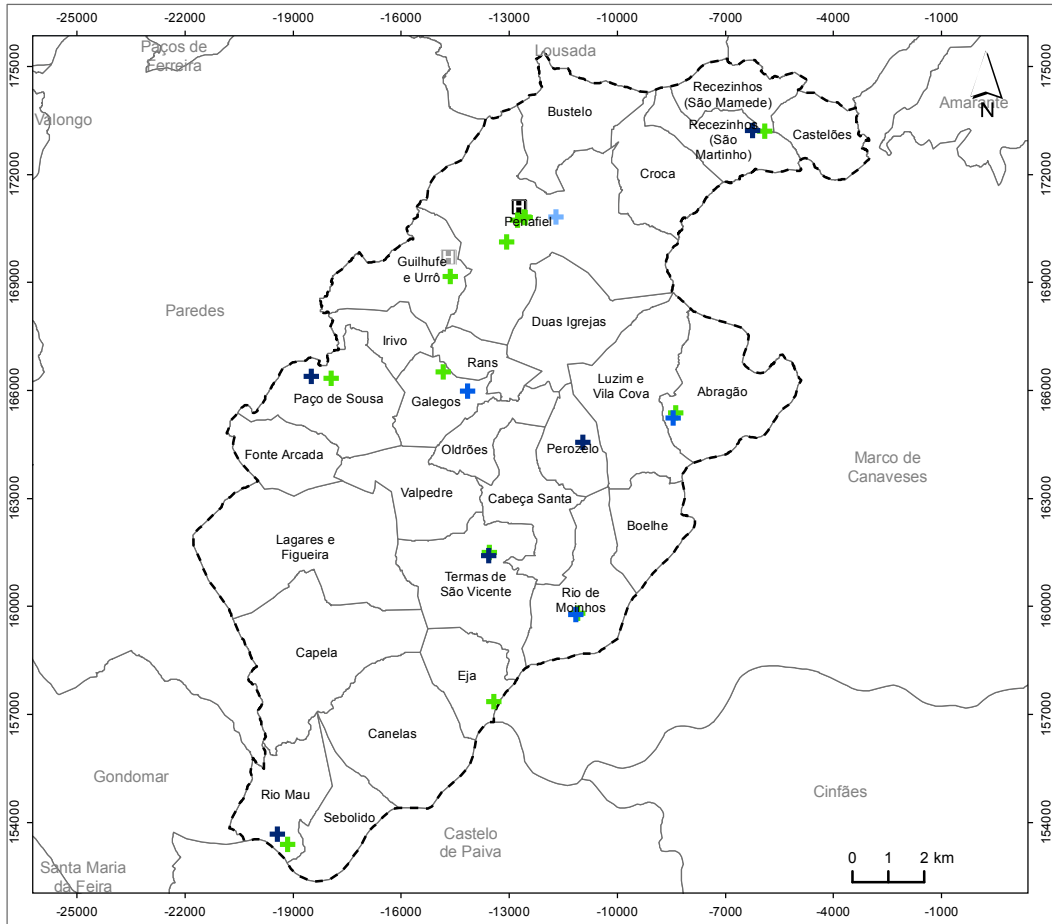








EQUIPAMENTOS DE SAÚDE NO CONCELHO DE PENAFIEL






LEGENDA:

Equipamentos de Saúde:

-  CHTS, EPE (Hospital Padre Américo)
-  Hospital de Arrifana de Sousa
-  Centro de Saúde
-  UCSP
-  USF
-  Farmácia

Limites Administrativos:

-  Concelho de Penafiel
-  Limites dos concelhos envolventes
-  Limite de freguesia

FONTE:

CAOP 2021.0 (2022), Direção-Geral do Território, 2022.
Equipamentos de Saúde, Município de Penafiel, 2022.

Sistema de Referência e Datum: PT-TM06/ETRS89
Projeção Cartográfica: Transversa de Mercator

Município de Penafiel

DATA DE ELABORAÇÃO:



AGOSTO DE 2022